

Title:			
Sidewalk Replacement			
RFQ Identification Number:			
ToFM-PW-RFQ-2025-012			
Administered by:	Brennan Orr, Director of Operations	Initiation Date:	2025.05.07
Contact:	operations@fortmacleod.com , (403) 553-4425	Close Date:	2025.05.23

1 Introduction

The Town of Fort Macleod is requesting quotations from individuals or contractors with experience in sidewalk replacement and installation of dropped curb access to sidewalk corners. In 2025 the Town is focused on the accessibility of sidewalks throughout the town as we look at barrier free corners.

The Town encourages contractors to seek efficiencies by combining several road and asphalt jobs which will be announced concurrently. Opportunities to reduce mob, waste, and scheduling costs will be considered when awarding individual contracts.

1. Interested parties must have proof of liability insurance, registered with WCB Alberta, a Town of Fort Macleod Business License, and detailed information on criteria for payment
2. The Town of Fort Macleod reserves the right to reject any and all bids
3. The Town of Fort Macleod has the right to select the proposal that best satisfies its interests and not necessarily on the basis of price or any other single factor
4. The town will not be liable for any additional work or damages directly attributed to neglect or poor workmanship of the prime contractor or any of their subcontractors

2 Scope

The Town of Fort Macleod will require the successful party to:

- Self-Assess the locations and current conditions, and suggest any efficiency for the course of work
 - Based on final bids and allocated budget the total work may have to be reduced
- Submit one standard corner wheelchair access drawing to be used as a type.
 - Understanding that adaptation will be required for varying existing corner structures, with minimum dimensions to be maintained

ToFM-PW-RFQ-2025-012	Sidewalk Replacement	Close Date	2025.05.23
operations@fortmacleod.com	Brennan Orr, Director of Operations	PO Box 1420, 410 20 th St	

The Town of Fort Macleod reserves the right to reject any and all bids. The Town has the right to select the proposal that best satisfies its interests and not necessarily on the basis of price or any other single factor.

- Coordinate all traffic controls, road closures, pedestrian signage and barricades, and communicate with the town for resident awareness
- Manage all equipment as well as worker safety and incident investigations
- Manage all demolition and removal of waste materials to achieve minimum depth
- Construct all forms
- Place and brush finish all concrete barrier free corners and replacement sidewalk sections
- Match all existing concrete
- Remove all forms
- Repair any asphalt that was required to be removed
- Mob and Demob – comment on efficiencies with other open tenders
- 1 year warranty

3 Schedule

The Town of Fort Macleod will require an estimated schedule of procurement, execution and completion. The successful party will coordinate:

- Site inspections to ensure understanding of the details of the bid
- Highlight any material deliveries delays
- Efficient coordination of multiple locations in town
- Traffic and pedestrian controls
- Clear communications of work areas and timing
- Work Execution
- Demob / Cleanup

4 Details

4.1 Scope:

- Plan and carry out a detailed schedule of location and work, coordinating preparations, placing concrete and finishing at the varied locations
 - 31 intersections
 - 65 dropped curb accesses

ToFM-PW-RFQ-2025-012	Sidewalk Replacement	Close Date	2025.05.23
operations@fortmacleod.com	Brennan Orr, Director of Operations	PO Box 1420, 410 20 th St	

The Town of Fort Macleod reserves the right to reject any and all bids. The Town has the right to select the proposal that best satisfies its interests and not necessarily on the basis of price or any other single factor.

- Manage all communications with the Town and on site with traffic control and pedestrian signage and barriers to ensure no vandalism or damage to curing concrete
- One Standard Corner dropped curb Wheelchair Access Drawing
 - Supply a standard drawing to be used and adapted to the specifics of each intersection corner
 - Example drawing City of Lethbridge drawing STR 11.2 for reference
 - Minimum dimensions to be met on each corner to include
 - Minimum ramp width
 - Flair width
 - Tooled groove detail
- Demolition
 - Removal of materials including concrete, asphalt, and base materials as required
- Prepare base and install forms
- Pour Concrete
 - Concrete Specifications
 - 32 MPa minimum at 28 days
 - Slump between 40mm and 75mm
 - Match existing curb styles
 - Minimum sidewalk thickness of 100mm
 - Broom finish
 - Total Values – inclusive of barrier free corners and adjacent sidewalk repair
 - Total Length:
 - ~ 684 ft at ~ 4 ft width or,
 - ~205.2 m at ~1.2m width
 - * a few exceptions to the width
 - Total Area:
 - ~ 2,810 ft² or,
 - ~ 255 m²
- Monitoring and communications / barricades to protect concrete while curing
- Form removal and site cleanup
- Repair of any removed or damaged asphalt adjacent to the sidewalk work
- Cleanup and Demob

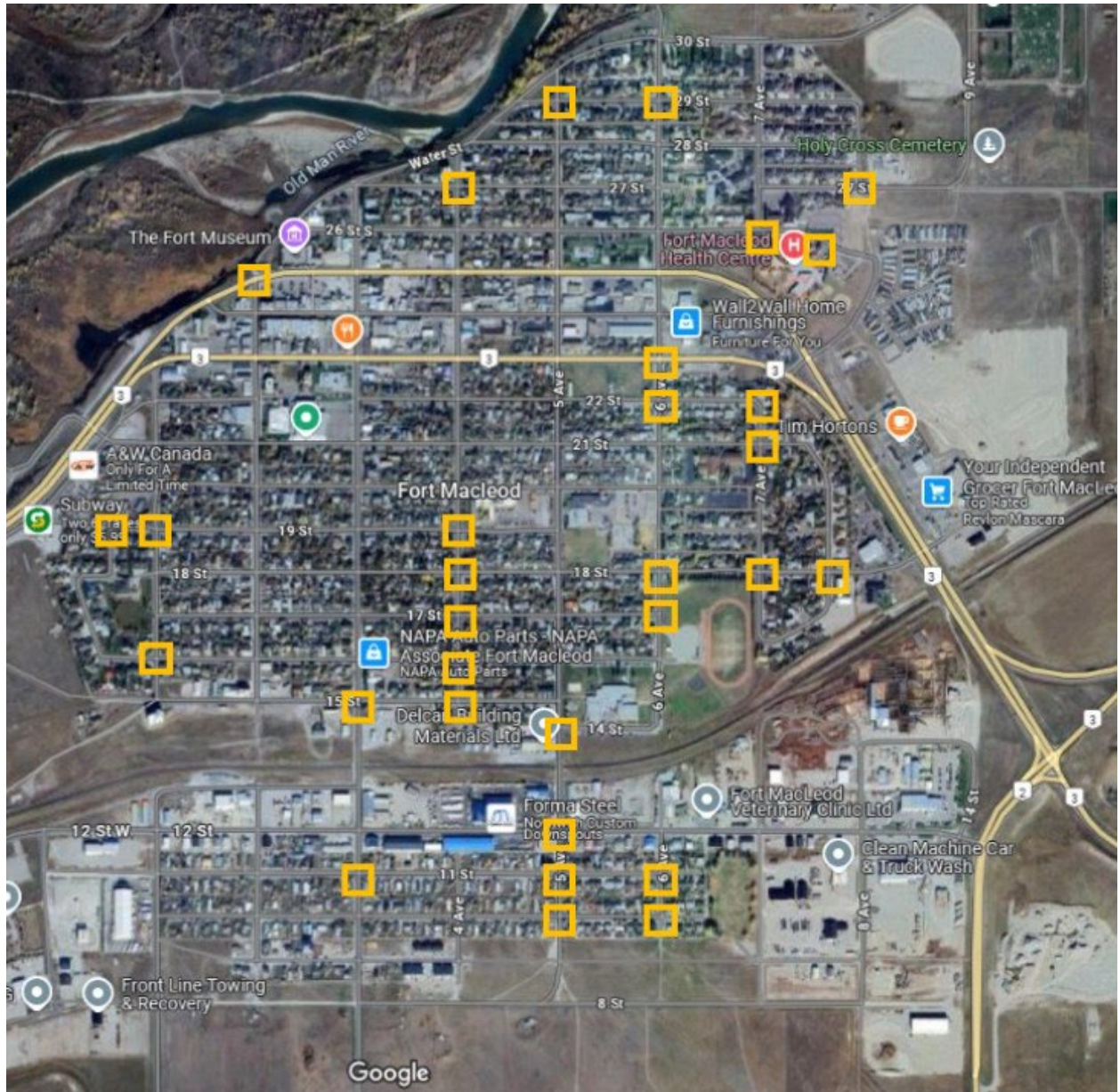
ToFM-PW-RFQ-2025-012	Sidewalk Replacement	Close Date	2025.05.23
operations@fortmacleod.com	Brennan Orr, Director of Operations	PO Box 1420, 410 20 th St	

The Town of Fort Macleod reserves the right to reject any and all bids. The Town has the right to select the proposal that best satisfies its interests and not necessarily on the basis of price or any other single factor.

- 1 year warranty coverage for workmanship and materials

4.2 Location / Area:

Figure 1



Note: Orange-highlighted squares designating thirty-one (31) intersection areas of work

ToFM-PW-RFQ-2025-012	Sidewalk Replacement	Close Date	2025.05.23
operations@fortmacleod.com	Brennan Orr, Director of Operations	PO Box 1420, 410 20 th St	

The Town of Fort Macleod reserves the right to reject any and all bids. The Town has the right to select the proposal that best satisfies its interests and not necessarily on the basis of price or any other single factor.

Figure 2

Intersection		Existing Sidewalk Specs				
Street	Avenue	Length (ft)	Width (ft)	Curb	Length (m)	Width (m)
10	6	8	4	Rolled	2.4	1.2
10	6	9	4	Rolled	2.7	1.2
10	6	7	4	Square	2.1	1.2
10	6	9	4	Square	2.7	1.2
11	6	8	4	Rolled	2.4	1.2
11	6	8	4	Rolled	2.4	1.2
11	6	8	4	Square	2.4	1.2
11	6	9	4	Square	2.7	1.2
17	6	10	4	Square	3	1.2
17	6	10	4	Square	3	1.2
18	6	10	4	Rolled	3	1.2
18	6	12	4	Rolled	3.6	1.2
18	6	9	4	Square	2.7	1.2
22	6	9	4	Rolled	2.7	1.2
22	6	12	4	Rolled	3.6	1.2
22	6	9	4	Square	2.7	1.2
23	6	10	4	Rolled	3	1.2
23	6	10	4	Square	3	1.2
29	6	7	4	Square	2.1	1.2
10	5	8	4	Square	2.4	1.2
10	5	7	4	Square	2.1	1.2
11	5	8	4	Rolled	2.4	1.2
11	5	10	4	Square	3	1.2
12	5	10	4	Rolled	3	1.2
12	5	15	4	Rolled	4.5	1.2
14	5	8	4	Rolled	2.4	1.2
14	5	8	4	Square	2.4	1.2
29	5	25	4	Square	7.5	1.2
29	5	11	4	Square	3.3	1.2
15	4	8	4	Square	2.4	1.2
15	4	15	4	Square	4.5	1.2
15	4	10	4	Square	3	1.2
16	4	10	4	Square	3	1.2
16	4	14	4	Square	4.2	1.2

ToFM-PW-RFQ-2025-012	Sidewalk Replacement	Close Date	2025.05.23
operations@fortmacleod.com	Brennan Orr, Director of Operations	PO Box 1420, 410 20 th St	

The Town of Fort Macleod reserves the right to reject any and all bids. The Town has the right to select the proposal that best satisfies its interests and not necessarily on the basis of price or any other single factor.

16	4	10	4	Square	3	1.2
16	4	14	4	Square	4.2	1.2
17	4	8	4	Square	2.4	1.2
17	4	8	4	Square	2.4	1.2
17	4	20	4	Square	6	1.2
18	4	10	4	Square	3	1.2
19	4	8	4	Square	2.4	1.2
Notice-this corner has a storm drain (19 th St & 4 th Ave)						
27	4	10	4	Square	3	1.2
16	1	15	4	Rolled	4.5	1.2
21	7	11	4	Square	3.3	1.2
21	7	13	4	Square	3.9	1.2
22	7	15	4	Square	4.5	1.2
18	7A	12	4	Square	3.6	1.2
18	7A	11	4	Square	3.3	1.2
18	7A	12	4	Square	3.6	1.2
18	7A	9	4	Square	2.7	1.2
18	7	9	4	Square	2.7	1.2
18	7	9	4	Square	2.7	1.2
18	7	9	4	Square	2.7	1.2
19	1	9	4	Rolled	2.7	1.2
19	Garrison Drive	15	4	Rolled	4.5	1.2
19	Garrison Drive	10	4	Rolled	3	1.2
15	3	12	10	Square	3.6	3
11	3	9	4	Rolled	2.7	1.2
27	8	11	4	Rolled	3.3	1.2
25	2	10	4	Square	3	1.2
25	2	12	5	Square	3.6	1.5
26	7	12	4	Rolled	3.6	1.2
25A	Hospital	10	4	Rolled	3	1.2
25A	Hospital	10	4	Rolled	3	1.2
25A	Hospital	10	4	Rolled	3	1.2

Note: Details of each intersection and sixty-five (65) drop curb sidewalk improvements including estimated replacement dimensions and current curb style

ToFM-PW-RFQ-2025-012	Sidewalk Replacement	Close Date	2025.05.23
operations@fortmacleod.com	Brennan Orr, Director of Operations	PO Box 1420, 410 20 th St	

The Town of Fort Macleod reserves the right to reject any and all bids. The Town has the right to select the proposal that best satisfies its interests and not necessarily on the basis of price or any other single factor.

4.3 Bid Details

Quoted Values

- Standard Design dropped curve Wheelchair Access
- Mob / Demob quantity and costs
- Per Wheelchair Access cost X 65 units – inclusive of adjacent sidewalk work

5 Submission Requirements

Please forward your price quotations to the Town of Fort Macleod

CLOSE DATE : Friday, May 23, 2025, at 4 PM

Electronically (Preferred)

Email Address: operations@fortmacleod.com

Subject Line: Include the RFQ Identification Number and Title

Attention: Brennan Orr, Director of Operations

Hand delivered

Address : 410-20th St. Fort Macleod, AB T0L 0Z0

Standard Mail

Attention: Brennan Orr

Town of Fort Macleod

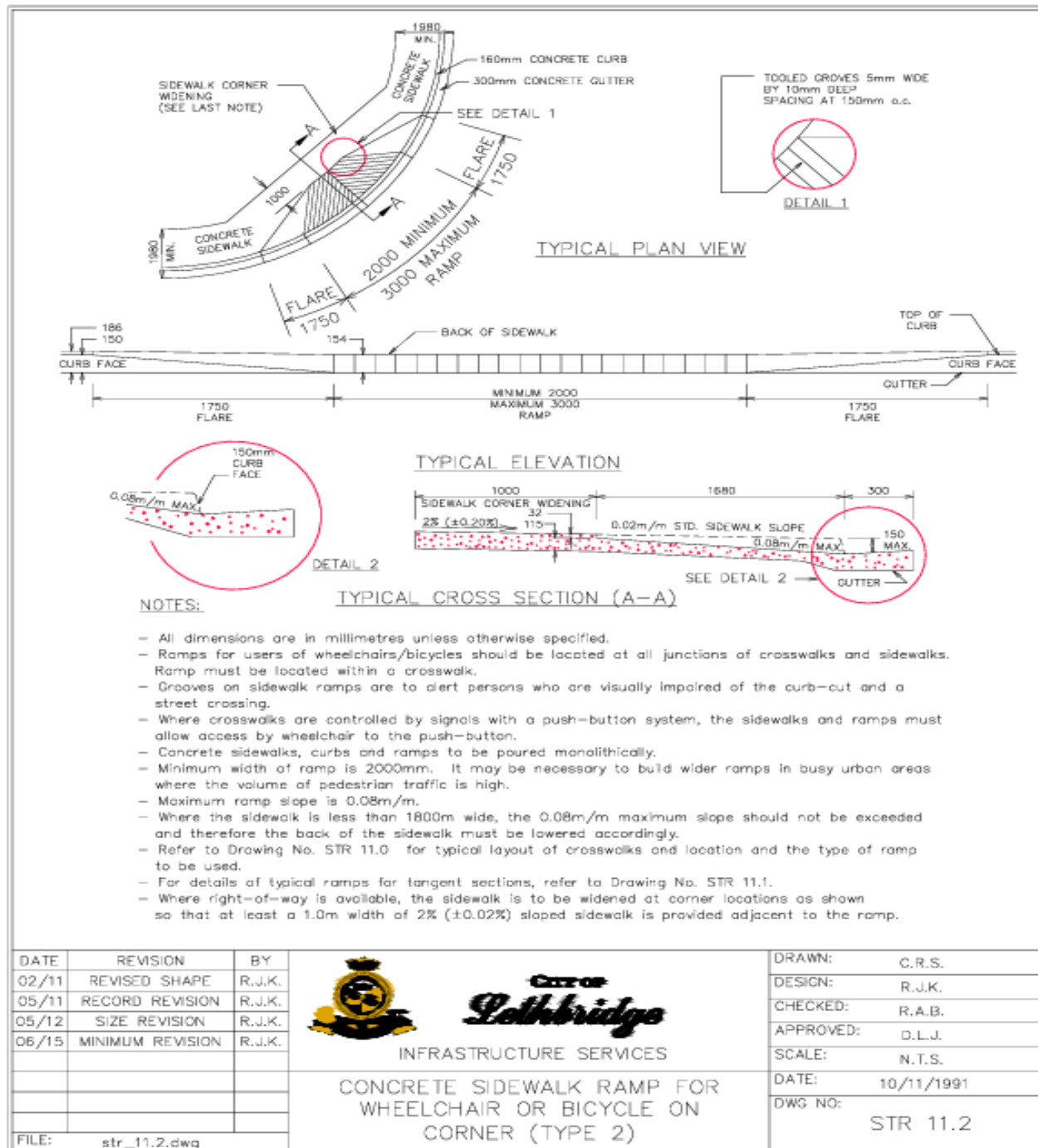
Box 1420

Fort Macleod, AB T0L 0Z0

ToFM-PW-RFQ-2025-012	Sidewalk Replacement	Close Date	2025.05.23
operations@fortmacleod.com	Brennan Orr, Director of Operations	PO Box 1420, 410 20 th St	

The Town of Fort Macleod reserves the right to reject any and all bids. The Town has the right to select the proposal that best satisfies its interests and not necessarily on the basis of price or any other single factor.

6 Appendix 1 – Sample Standard Dropped Curb Wheelchair Access



ToFM-PW-RFQ-2025-012	Sidewalk Replacement	Close Date	2025.05.23
operations@fortmacleod.com	Brennan Orr, Director of Operations	PO Box 1420, 410 20 th St	

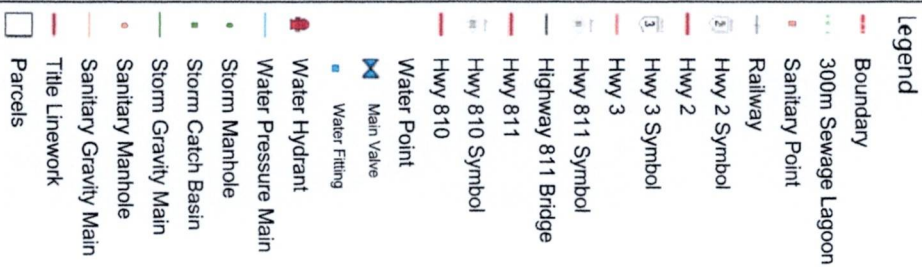
The Town of Fort Macleod reserves the right to reject any and all bids. The Town has the right to select the proposal that best satisfies its interests and not necessarily on the basis of price or any other single factor.

7 Appendix 2 – Detailed Intersection Information

ToFM-PW-RFQ-2025-012	Sidewalk Replacement	Close Date	2025.05.23
operations@fortmacleod.com	Brennan Orr, Director of Operations	PO Box 1420, 410 20 th St	

The Town of Fort Macleod reserves the right to reject any and all bids. The Town has the right to select the proposal that best satisfies its interests and not necessarily on the basis of price or any other single factor.

Fort Macleod
Town of

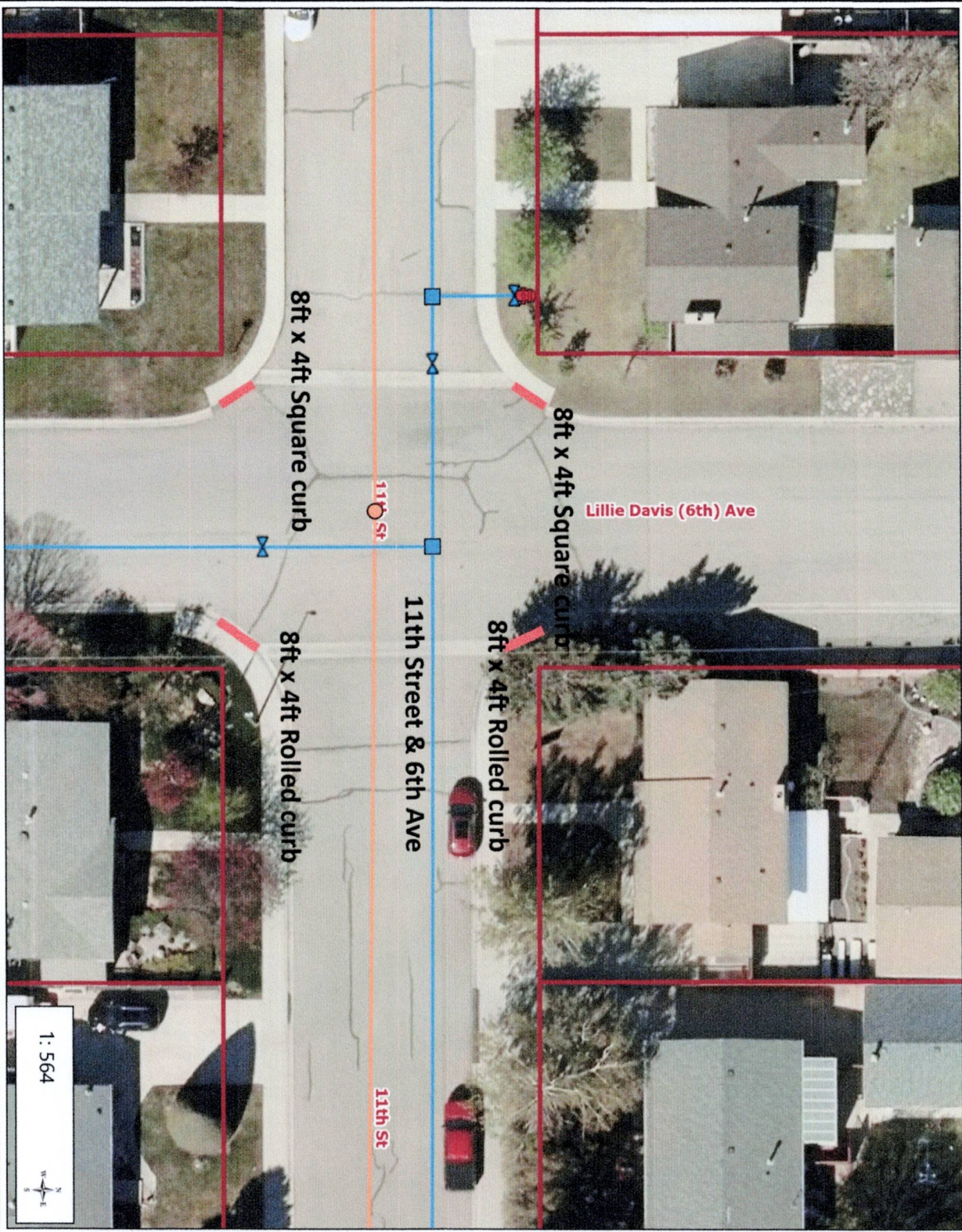


© Town of Fort Madeod

This map is a user-generated static output from an Internet mapping site and is for reference only. Data layers that appear on this map may or may not be accurate,

THIS MAP IS NOT TO BE USED FOR NAVIGATION

Town of Fort Macleod



1: 564



0.0 0 0.01 0.0 Kilometers
WGS_1984_Web_Mercator_Auxiliary_Sphere

This map is a user generated static output from an Internet mapping site and is for reference only. Data layers that appear on this map may or may not be accurate, current, or otherwise reliable.

THIS MAP IS NOT TO BE USED FOR NAVIGATION



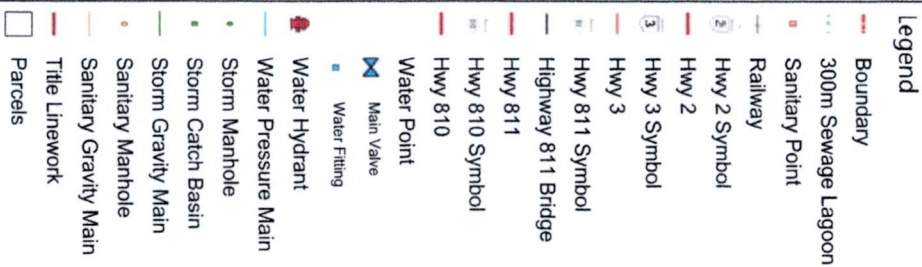
Legend

- Boundary
- 300m Sewage Lagoon
- Sanitary Point
- Railway
- Hwy 2 Symbol
- Hwy 2
- Hwy 3 Symbol
- Hwy 3
- Hwy 811 Symbol
- Highway 811 Bridge
- Hwy 811
- Hwy 810 Symbol
- Hwy 810
- Water Point
- Main Valve
- Water Fitting
- Water Hydrant
- Water Pressure Main
- Storm Manhole
- Storm Catch Basin
- Storm Gravity Main
- Sanitary Manhole
- Sanitary Gravity Main
- Title Linework
- Parcels

Notes

© Town of Fort Macleod

Fort Macleod



© Town of Fort Madeod

THIS MAP IS NOT TO BE USED FOR NAVIGATION

WGS_1984_Web_Mercator_Auxiliary_Sphere

Town of Fort Macleod

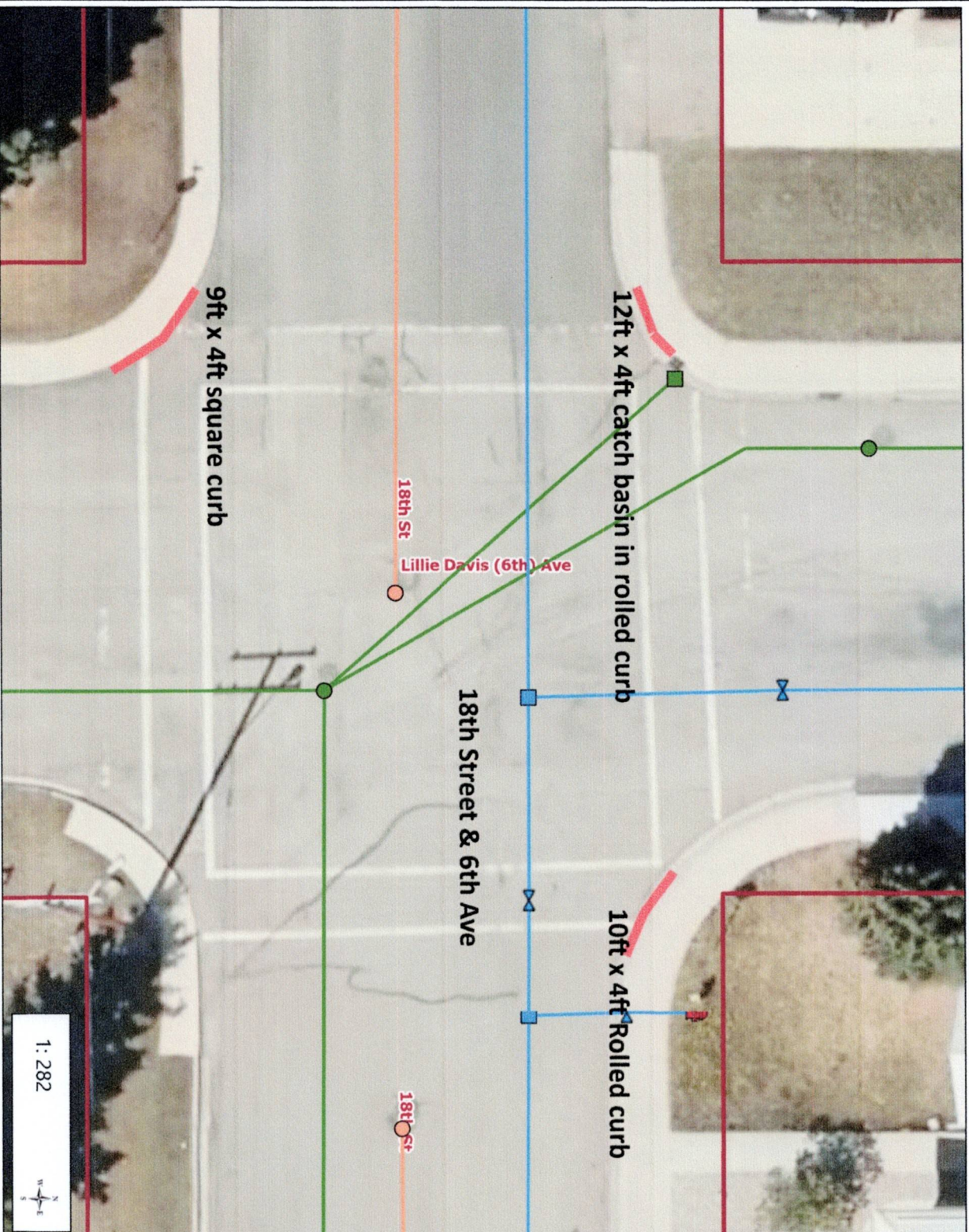


Legend

- Boundary
- 300m Sewage Lagoon
- Sanitary Point
- Railway
- 1 Hwy 2 Symbol
- 2 Hwy 2
- 3 Hwy 3 Symbol
- 3 Hwy 3
- 811 Hwy 811 Symbol
- 811 Highway 811 Bridge
- 810 Hwy 810
- 810 Hwy 810 Symbol
- 811 Hwy 811
- Water Point
- Main Valve
- Water Fitting
- Water Hydrant
- Water Pressure Main
- Storm Manhole
- Storm Catch Basin
- Storm Gravity Main
- Sanitary Manhole
- Sanitary Gravity Main
- Title Linework
- Parcels

Notes

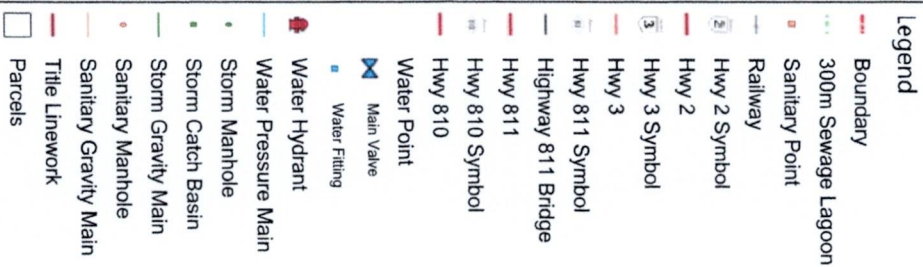
© Town of Fort Macleod



This map is a user generated static output from an internet mapping site and is for reference only. Data layers that appear on this map may or may not be accurate, current, or otherwise reliable.

THIS MAP IS NOT TO BE USED FOR NAVIGATION

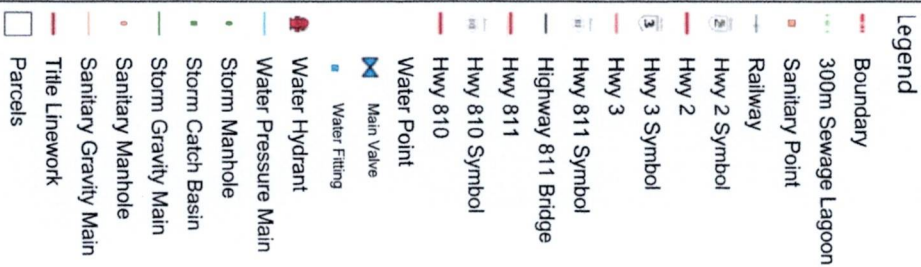
WGS_1984_Web_Mercator_Auxiliary_Sphere



© Town of Fort Madeod

WGS_1984_Web_Mercator_Auxiliary_Sphere

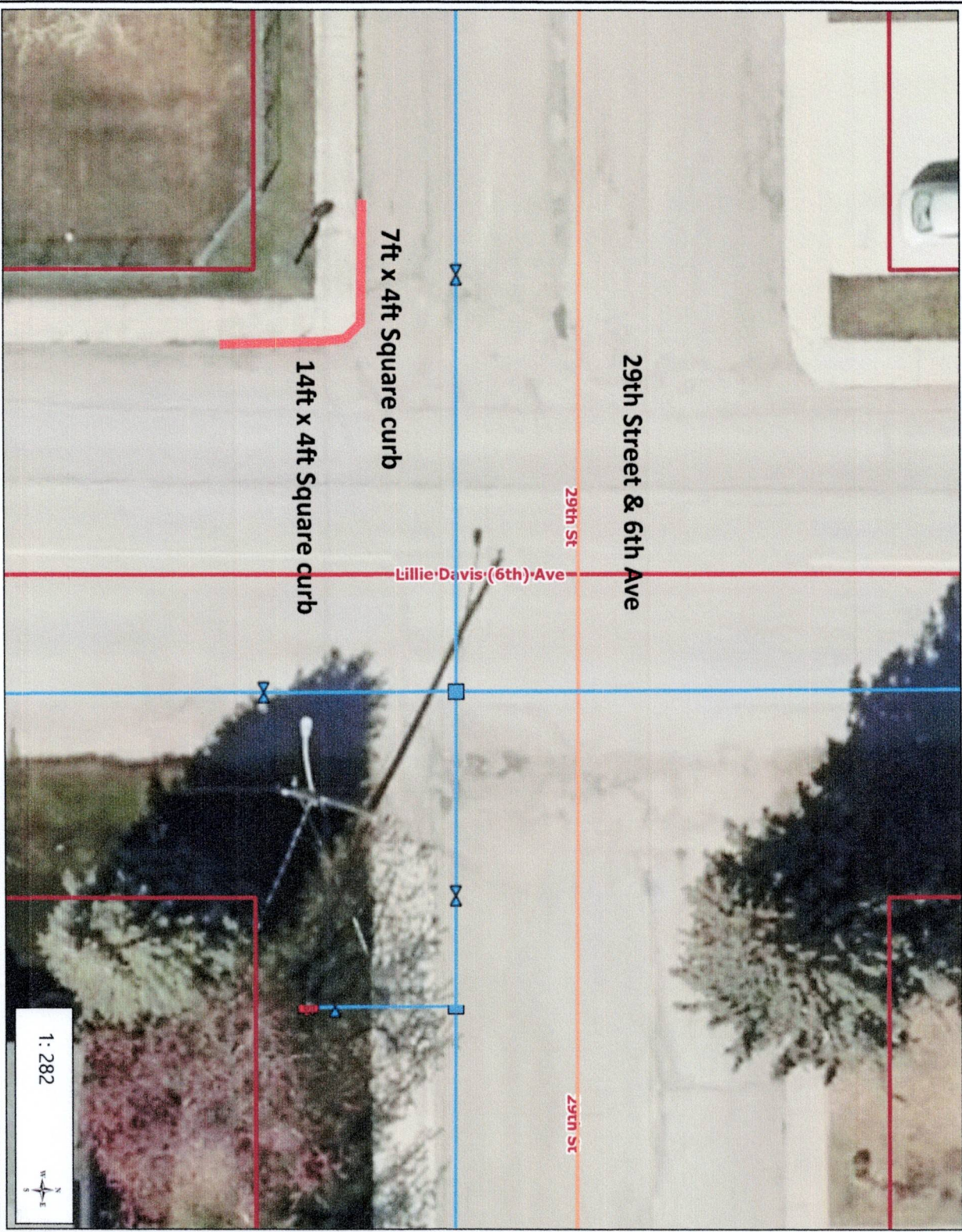
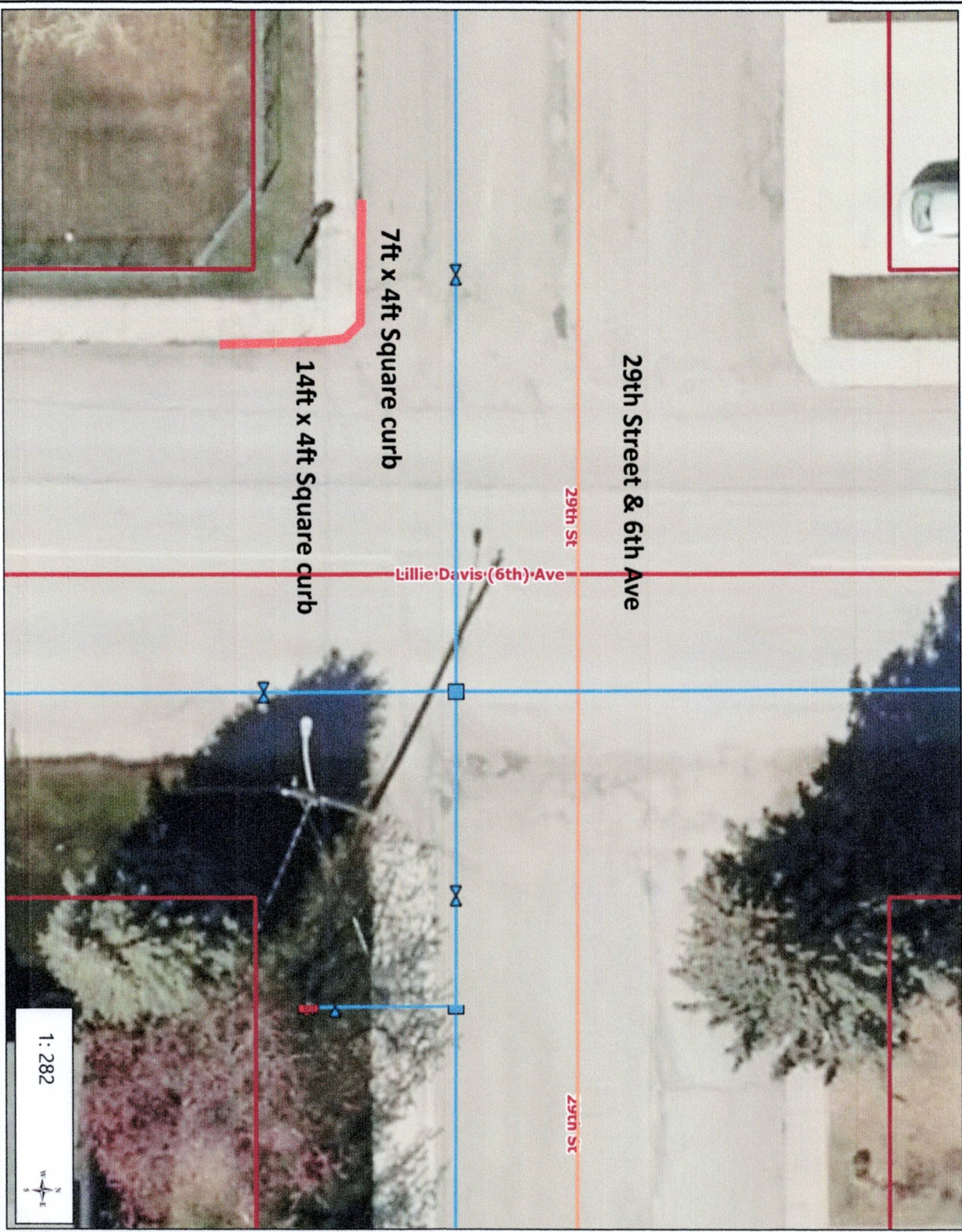
THIS MAP IS NOT TO BE USED FOR NAVIGATION



© Town of Fort Macleod

THIS MAP IS NOT TO BE USED FOR NAVIGATION

Town of Fort Macleod



1:282



Notes

© Town of Fort Madeod

Notes

© Town of Fort Madeod

- | Legend | |
|--------|-----------------------|
| | Boundary |
| | 300m Sewage Lagoon |
| | Sanitary Point |
| | Railway |
| | Hwy 2 Symbol |
| | Hwy 2 |
| | Hwy 3 Symbol |
| | Hwy 3 |
| | Hwy 811 Symbol |
| | Highway 811 Bridge |
| | Hwy 811 |
| | Hwy 810 Symbol |
| | Hwy 810 |
| | Water Point |
| | Main Valve |
| | Water Fitting |
| | Water Hydrant |
| | Water Pressure Main |
| | Storm Manhole |
| | Storm Catch Basin |
| | Storm Gravity Main |
| | Sanitary Manhole |
| | Sanitary Gravity Main |
| | Title Linework |
| | Parcels |

0.0 0 0.01 0.0 Kilometers

WGS_1984_Web_Mercator_Auxiliary_Sphere

This map is a user generated static output from an Internet mapping site and is for reference only. Data layers that appear on this map may or may not be accurate, current, or otherwise reliable.

THIS MAP IS NOT TO BE USED FOR NAVIGATION

0.0 0 0.01 0.0 Kilometers

WGS_1984_Web_Mercator_Auxiliary_Sphere

This map is a user generated static output from an Internet mapping site and is for reference only. Data layers that appear on this map may or may not be accurate, current, or otherwise reliable.

THIS MAP IS NOT TO BE USED FOR NAVIGATION

0.0 0 0.01 0.0 Kilometers

WGS_1984_Web_Mercator_Auxiliary_Sphere

This map is a user generated static output from an Internet mapping site and is for reference only. Data layers that appear on this map may or may not be accurate, current, or otherwise reliable.

THIS MAP IS NOT TO BE USED FOR NAVIGATION

Town of Fort Macleod



WGS_1984_Web_Mercator_Auxiliary_Sphere

current, or otherwise reliable

THIS MAP IS NOT TO BE USED FOR NAVIGATION

THIS MAP IS NOT TO BE USED FOR NAVIGATION

Town of Fort Macleod



Legend

- Boundary
- 300m Sewage Lagoon
- Sanitary Point
- Railway
- Hwy 2 Symbol
- Hwy 2
- Hwy 3 Symbol
- Hwy 3
- Hwy 811 Symbol
- Highway 811 Bridge
- Hwy 811
- Hwy 810 Symbol
- Hwy 810
- Water Point
- Main Valve
- Water Fitting
- Water Hydrant
- Water Pressure Main
- Storm Manhole
- Storm Catch Basin
- Storm Gravity Main
- Sanitary Manhole
- Sanitary Gravity Main
- Title Linework
- Parcels

Notes

© Town of Fort Macleod



1:564



This map is a user generated static output from an Internet mapping site and is for reference only. Data layers that appear on this map may or may not be accurate, current, or otherwise reliable.

THIS MAP IS NOT TO BE USED FOR NAVIGATION

WGS_1984_Web_Mercator_Auxiliary_Sphere

Town of Fort Macleod



Legend

- Boundary
- Railway
- 2 Hwy 2 Symbol
- 2 Hwy 2
- 3 Hwy 3 Symbol
- 3 Hwy 3
- 811 Hwy 811 Symbol
- 811 Highway 811 Bridge
- 811 Hwy 811
- 810 Hwy 810 Symbol
- 810 Hwy 810
- Storm Manhole
- Storm Catch Basin
- Storm Gravity Main
- Title Linework
- Parcels

Notes

© Town of Fort Macleod



0.0 0 0.01 0.0 Kilometers
WGS_1984_Web_Mercator_Auxiliary_Sphere

This map is a user generated static output from an Internet mapping site and is for reference only. Data layers that appear on this map may or may not be accurate, current, or otherwise reliable.

THIS MAP IS NOT TO BE USED FOR NAVIGATION

Town of Fort Macleod

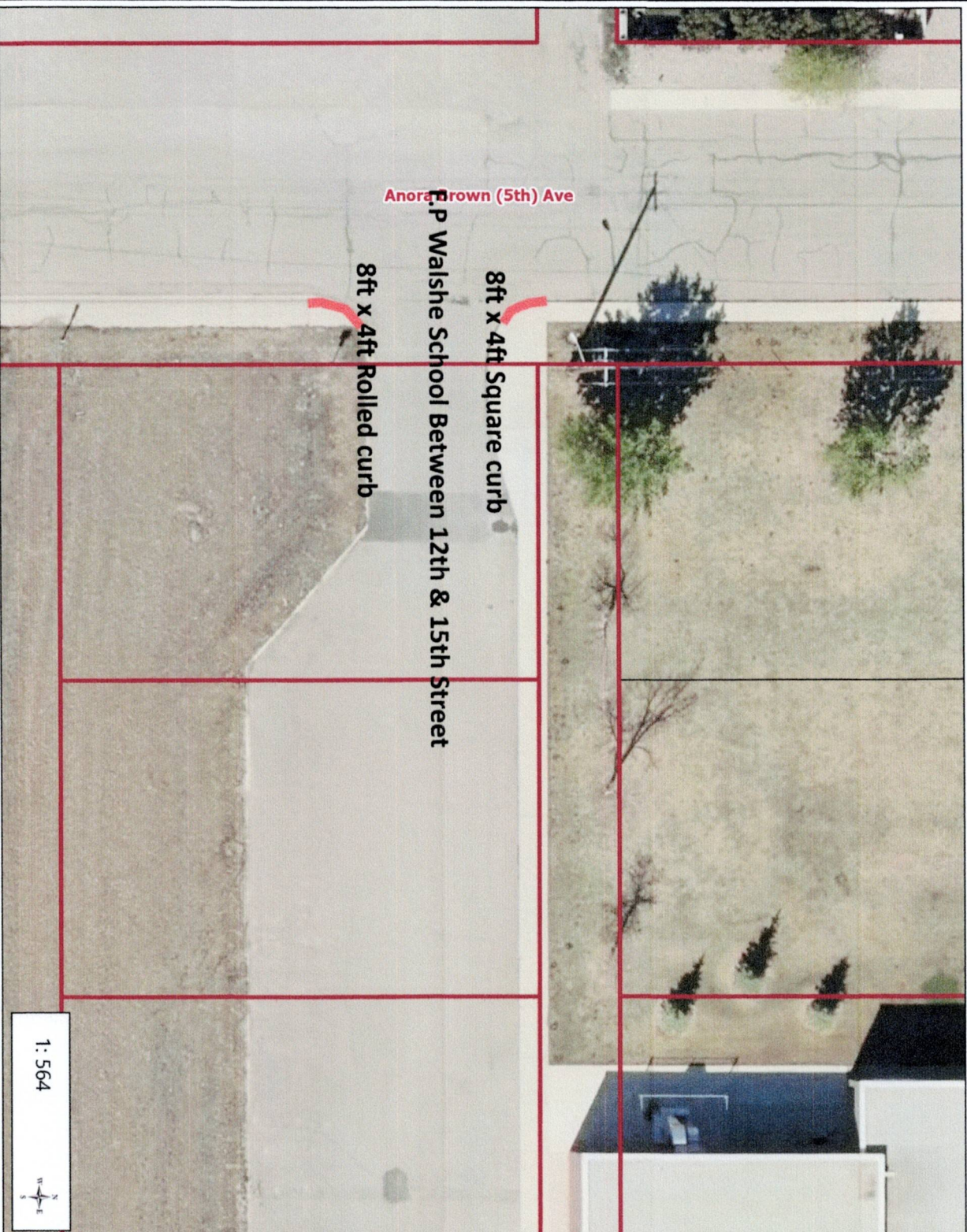


Legend

- Boundary
- Railway
- Hwy 2 Symbol
- Hwy 2
- Hwy 3 Symbol
- Hwy 3
- Hwy 811 Symbol
- Highway 811 Bridge
- Hwy 811
- Hwy 810 Symbol
- Hwy 810
- Storm Manhole
- Storm Catch Basin
- Storm Gravidy Main
- Title Linework
- Parcels

Notes

© Town of Fort Macleod



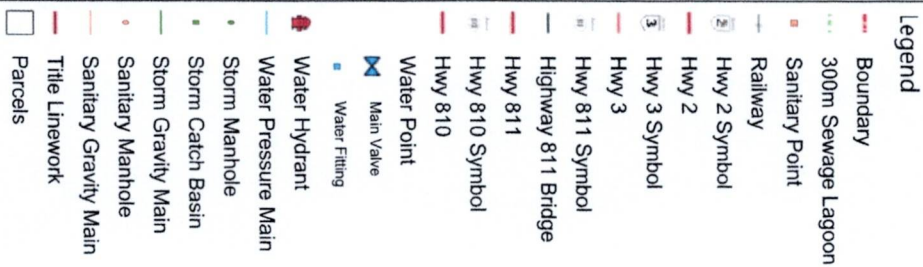
1: 564



This map is a user generated static output from an internet mapping site and is for reference only. Data layers that appear on this map may or may not be accurate, current, or otherwise reliable.

THIS MAP IS NOT TO BE USED FOR NAVIGATION

0.0 0 0.01 0.0 Kilometers
WGS_1984_Web_Mercator_Auxiliary_Sphere



© Town of Fort Madeod

THIS MAP IS NOT TO BE USED FOR NAVIGATION

Town of Fort Macleod



Legend

- Boundary
- Railway
- Hwy 2 Symbol
- Hwy 2
- Hwy 3 Symbol
- Hwy 3
- Hwy 811 Symbol
- Highway 811 Bridge
- Hwy 811
- Hwy 810 Symbol
- Hwy 810
- Title Linework
- Parcels

Notes

© Town of Fort Macleod



0.0 0 0.01 0.0 Kilometers
WGS_1984_Web_Mercator_Auxiliary_Sphere

This map is a user generated static output from an Internet mapping site and is for reference only. Data layers that appear on this map may or may not be accurate, current, or otherwise reliable.

THIS MAP IS NOT TO BE USED FOR NAVIGATION

Town of Fort Macleod

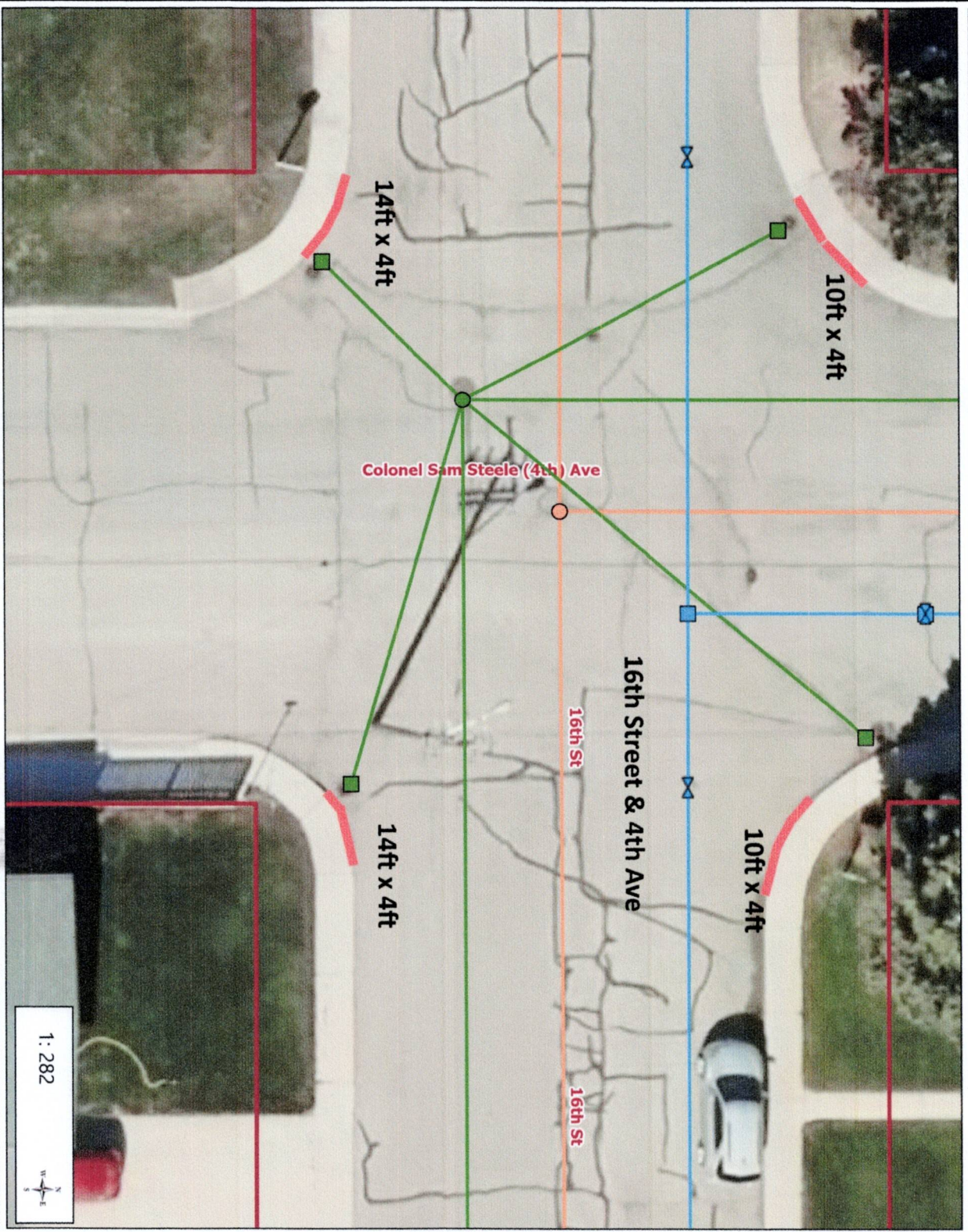


Legend

- Boundary
- 300m Sewage Lagoon
- Sanitary Point
- Railway
- Hwy 2 Symbol
- Hwy 2
- Hwy 3 Symbol
- Hwy 3
- Hwy 811 Symbol
- Highway 811 Bridge
- Hwy 811
- Hwy 810 Symbol
- Hwy 810
- Water Point
- Main Valve
- Water Fitting
- Water Hydrant
- Water Pressure Main
- Storm Manhole
- Storm Catch Basin
- Storm Gravity Main
- Sanitary Manhole
- Sanitary Gravity Main
- Title Linework
- Parcels

Notes

© Town of Fort Macleod



0.0 0 0.01 0.0 Kilometers
WGS_1984_Web_Mercator_Auxiliary_Sphere

This map is a user generated static output from an Internet mapping site and is for reference only. Data layers that appear on this map may or may not be accurate, current, or otherwise reliable.
THIS MAP IS NOT TO BE USED FOR NAVIGATION

Town of Fort Macleod

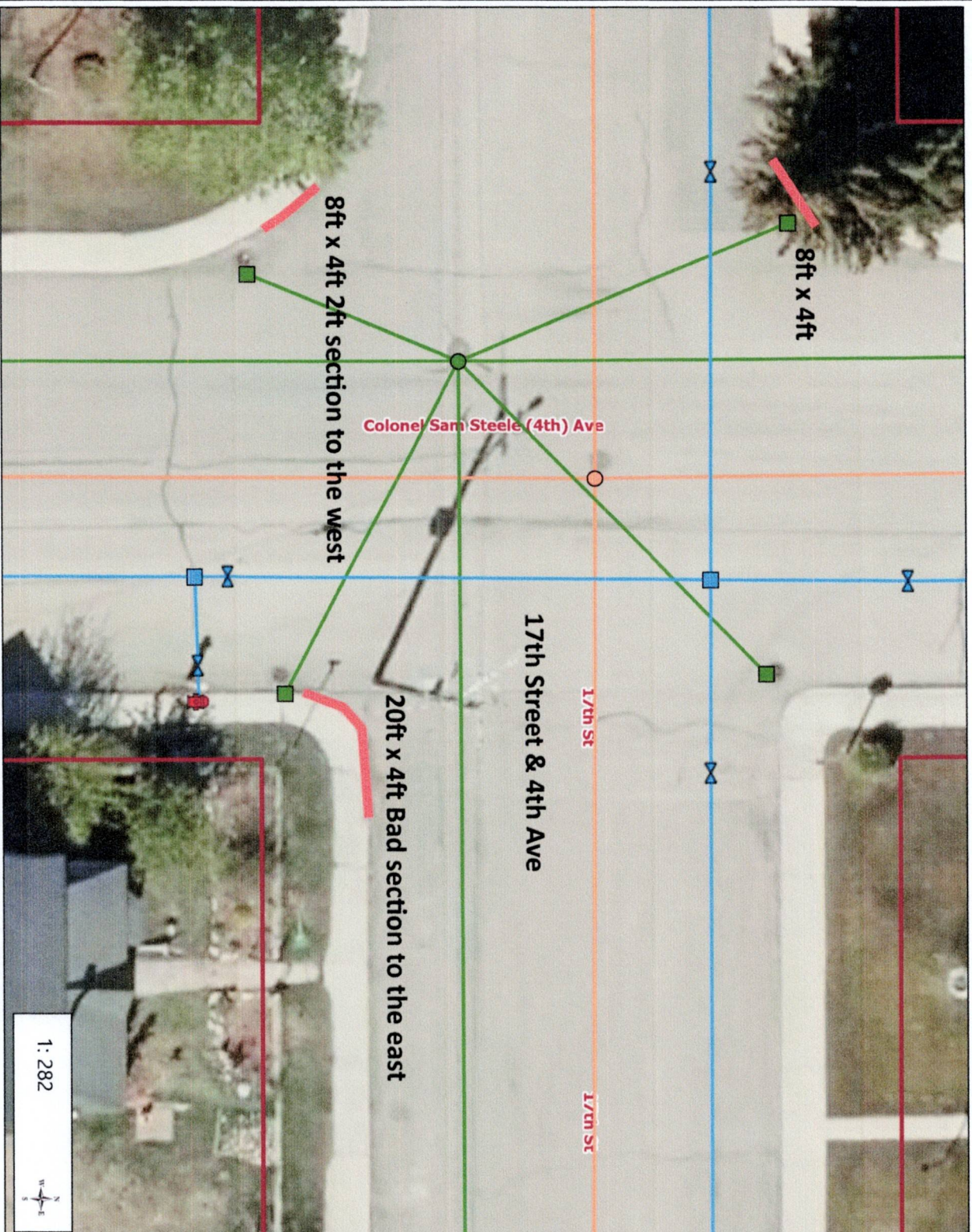


Legend

- Boundary
- 300m Sewage Lagoon
- Sanitary Point
- Railway
- Hwy 2 Symbol
- Hwy 2
- Hwy 3 Symbol
- Hwy 3
- Hwy 811 Symbol
- Highway 811 Bridge
- Hwy 811
- Hwy 810 Symbol
- Hwy 810
- Water Point
- Main Valve
- Water Fitting
- Water Hydrant
- Water Pressure Main
- Storm Manhole
- Storm Catch Basin
- Storm Gravity Main
- Sanitary Manhole
- Sanitary Gravity Main
- Title Linework
- Parcels

Notes

© Town of Fort Macleod



1:282

0.0 0 0.01 0.0 Kilometers
WGS_1984_Web_Mercator_Auxiliary_Sphere

This map is a user generated static output from an internet mapping site and is for reference only. Data layers that appear on this map may or may not be accurate, current, or otherwise reliable.

THIS MAP IS NOT TO BE USED FOR NAVIGATION

Town of Fort Macleod

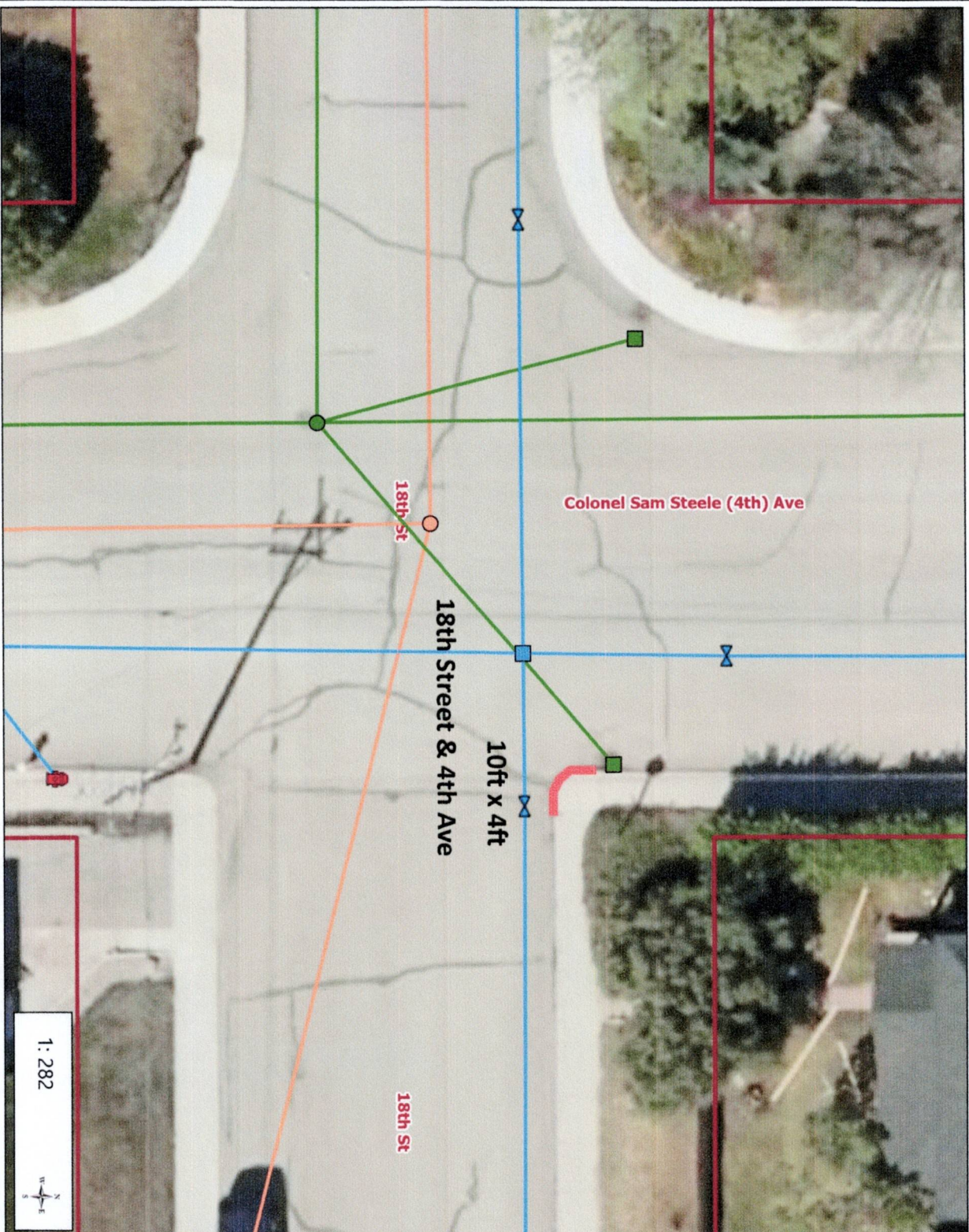


Legend

- Boundary
- 300m Sewage Lagoon
- Sanitary Point
- Railway
- Hwy 2 Symbol
- Hwy 2
- Hwy 3 Symbol
- Hwy 3
- Hwy 811 Symbol
- Highway 811 Bridge
- Hwy 810
- Hwy 811
- Hwy 810 Symbol
- Hwy 810
- Water Point
- Main Valve
- Water Fitting
- Water Hydrant
- Water Pressure Main
- Storm Manhole
- Storm Catch Basin
- Storm Gravity Main
- Sanitary Manhole
- Sanitary Gravity Main
- Title Linework
- Parcels

Notes

© Town of Fort Macleod



1: 282



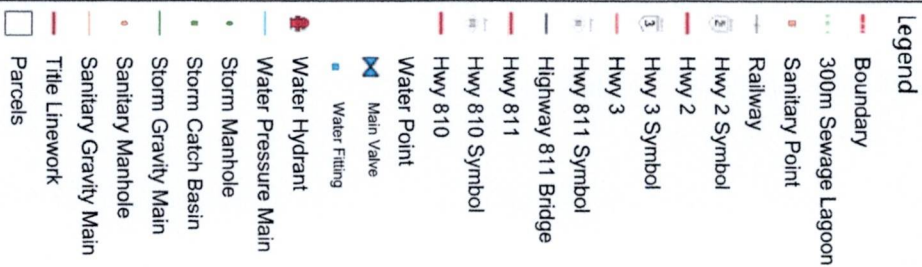
0.0 0 0.01 0.0 Kilometers

WGS_1984_Web_Mercator_Auxiliary_Sphere

This map is a user generated static output from an internet mapping site and is for reference only. Data layers that appear on this map may or may not be accurate, current, or otherwise reliable.

THIS MAP IS NOT TO BE USED FOR NAVIGATION

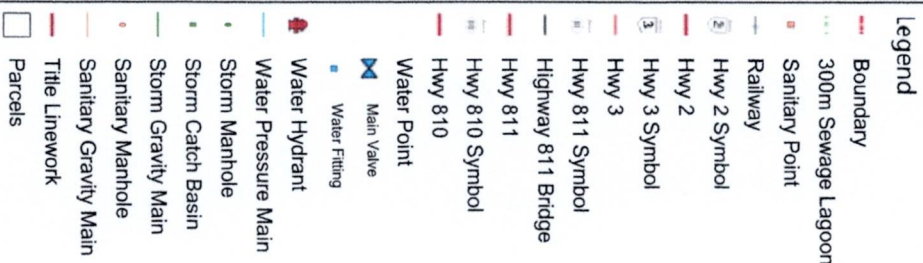
Fort Macleod



© Town of Fort Madeod

WGS_1984_Web_Mercator_Auxiliary_Sphere

THIS MAP IS NOT TO BE USED FOR NAVIGATION



© Town of Fort Macleod

THIS MAP IS NOT TO BE USED FOR NAVIGATION

Town of Fort Macleod



Legend

- Boundary
- Railway
- Hwy 2 Symbol
- Hwy 2
- Hwy 3 Symbol
- Hwy 3
- Hwy 811 Symbol
- Highway 811 Bridge
- Hwy 811
- Hwy 810 Symbol
- Hwy 810
- Title Linework
- Parcels

Notes

© Town of Fort Macleod

0.0 0 0.01 0.0 Kilometers
WGS_1984, Web_Mercator_Auxiliary_Sphere

This map is a user generated static output from an Internet mapping site and is for reference only. Data layers that appear on this map may or may not be accurate, current, or otherwise reliable.

THIS MAP IS NOT TO BE USED FOR NAVIGATION

Town of Fort Macleod

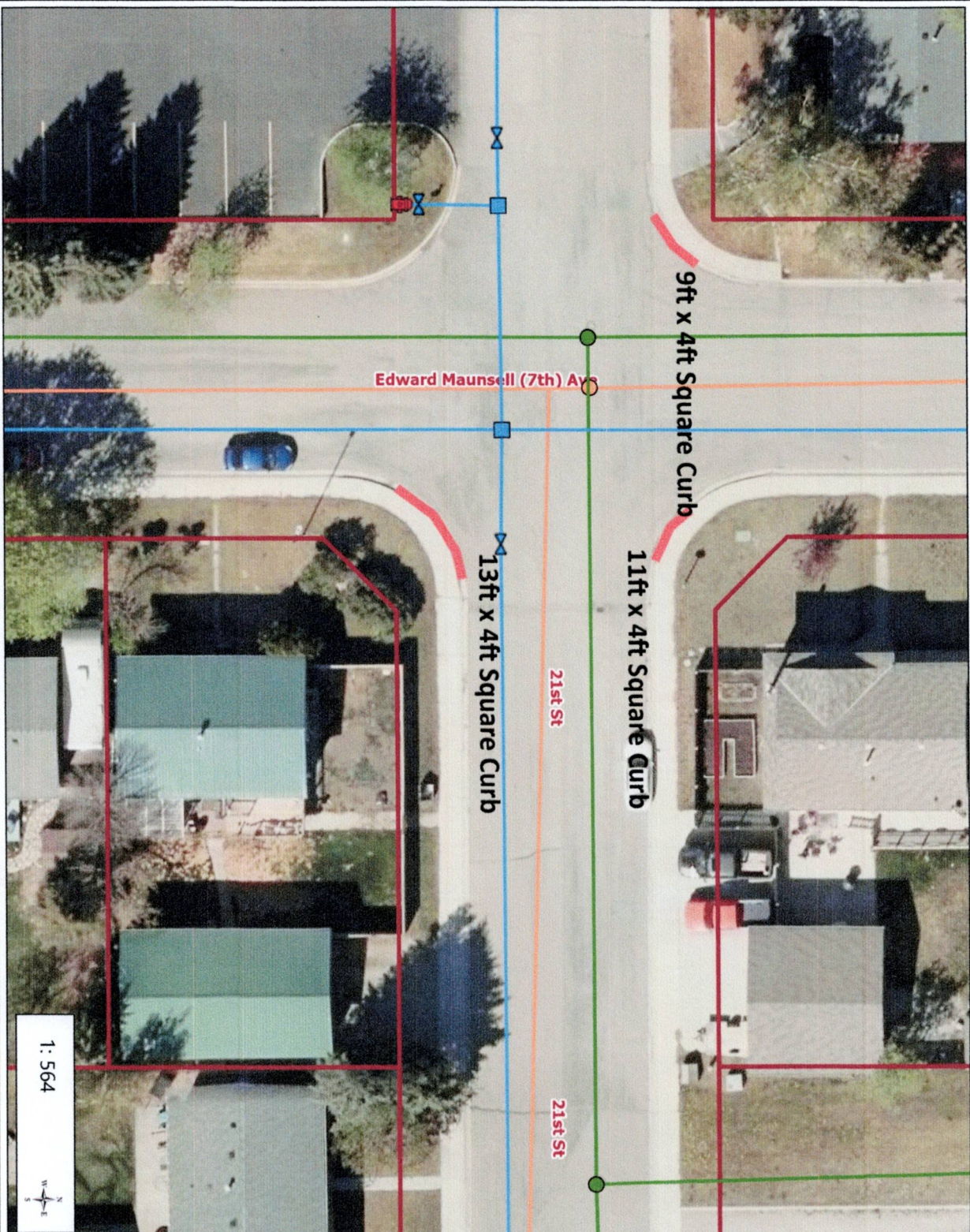


Legend

- Boundary
- 300m Sewage Lagoon
- Sanitary Point
- Railway
- 1 Hwy 2 Symbol
- 2 Hwy 2
- 3 Hwy 3 Symbol
- 3 Hwy 3
- Hwy 811 Symbol Hwy 811 Symbol
- Hwy 811 Highway 811 Bridge
- Hwy 810 Hwy 810
- Hwy 810 Symbol Hwy 810 Symbol
- Water Point
- Main Valve
- Water Fitting
- Water Hydrant
- Water Pressure Main
- Storm Manhole
- Storm Catch Basin
- Storm Gravity Main
- Sanitary Manhole
- Sanitary Gravity Main
- Title Linework
- Parcels

Notes

© Town of Fort Macleod



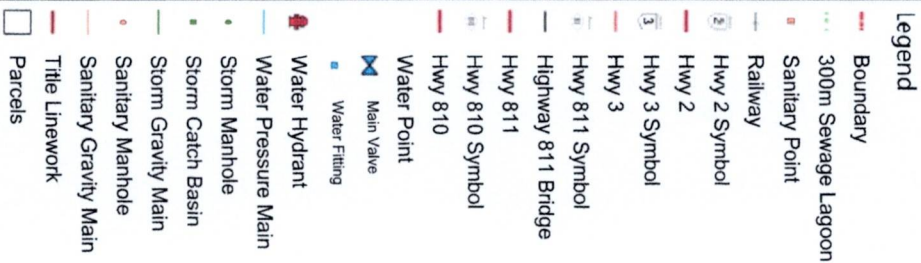
1: 564



This map is a user generated static output from an Internet mapping site and is for reference only. Data layers that appear on this map may or may not be accurate, current, or otherwise reliable.

THIS MAP IS NOT TO BE USED FOR NAVIGATION

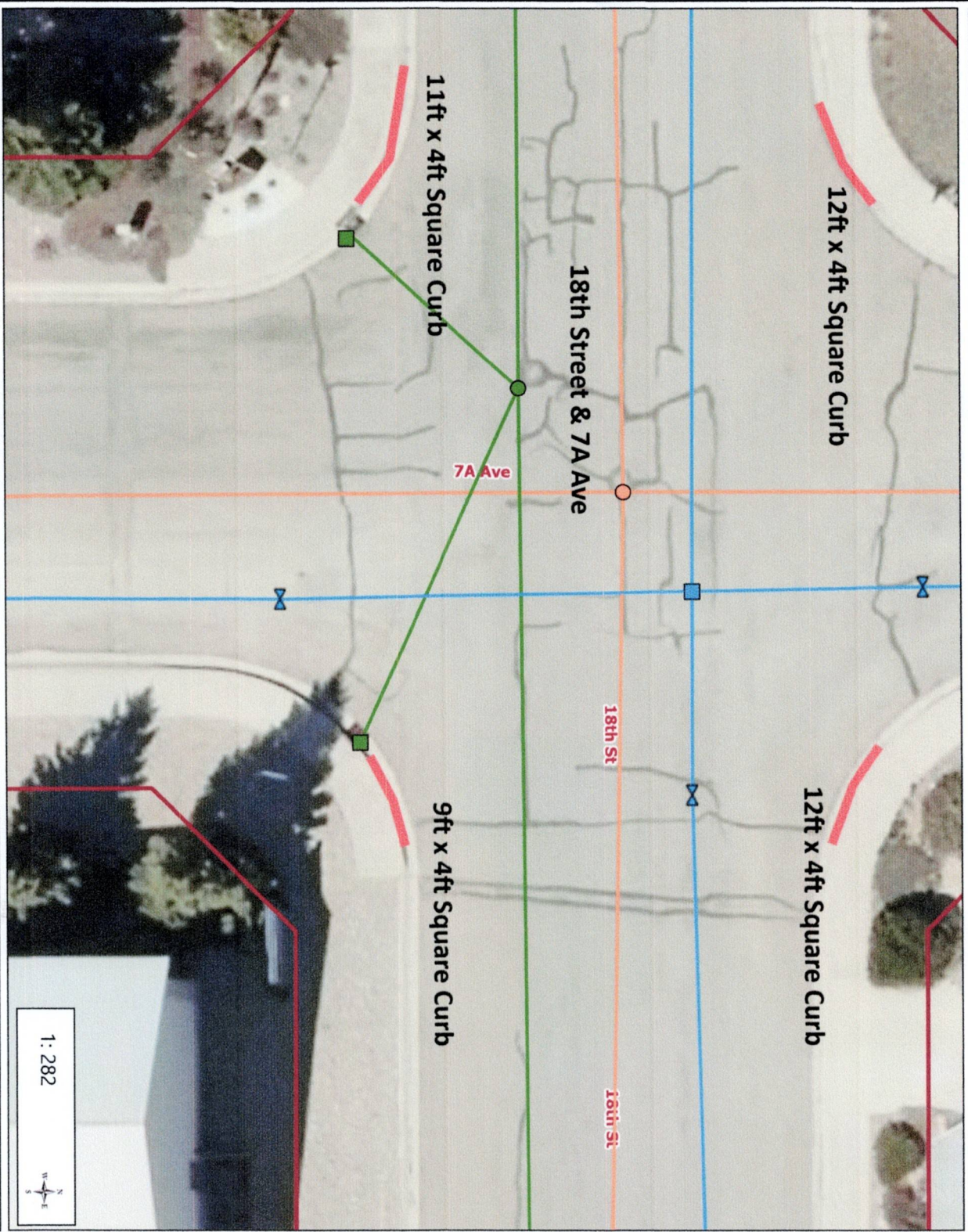
0.0 0 0.01 0.0 Kilometers
WGS_1984_Web_Mercator_Auxiliary_Sphere



© Town of Fort Madeod

THIS MAP IS NOT TO BE USED FOR NAVIGATION

Town of Fort Macleod



WGS_1984_Web_Mercator_Auxiliary_Sphere

1:282



This map is a user generated static output from an Internet mapping site and is for reference only. Data layers that appear on this map may or may not be accurate, current, or otherwise reliable.

THIS MAP IS NOT TO BE USED FOR NAVIGATION

Legend

- Boundary
- 300m Sewage Lagoon
- Sanitary Point
- Railway
- Hwy 2 Symbol
- Hwy 2
- Hwy 3 Symbol
- Hwy 3
- Hwy 811 Symbol
- Highway 811 Bridge
- Hwy 811
- Hwy 810 Symbol
- Hwy 810
- Water Point
- Main Valve
- Water Fitting
- Water Hydrant
- Water Pressure Main
- Storm Manhole
- Storm Catch Basin
- Storm Gravity Main
- Sanitary Manhole
- Sanitary Gravity Main
- Title Linework
- Parcels

Notes

© Town of Fort Macleod

Town of Fort Macleod

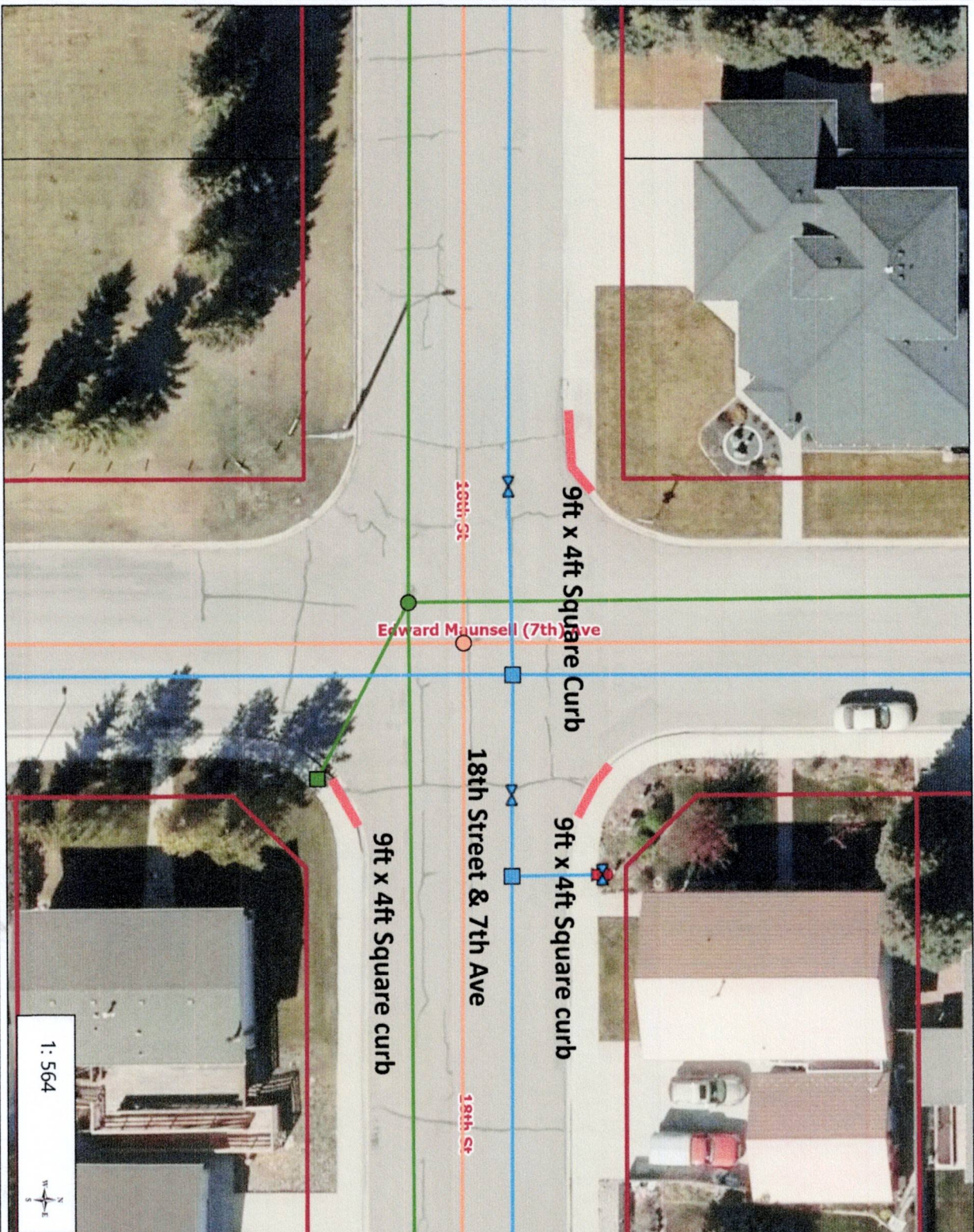


Legend

- Boundary
- 300m Sewage Lagoon
- Sanitary Point
- Railway
- 1 Hwy 2 Symbol
- 2 Hwy 2
- 3 Hwy 3 Symbol
- 3 Hwy 3
- Hwy 811 Symbol
- Highway 811 Bridge
- Hwy 811
- Hwy 810 Symbol
- Hwy 810
- Water Point
- Main Valve
- Water Fitting
- Water Hydrant
- Water Pressure Main
- Storm Manhole
- Storm Catch Basin
- Storm Gravity Main
- Sanitary Manhole
- Sanitary Gravity Main
- Title Linework
- Parcels

Notes

© Town of Fort Macleod



0.0 0 0.01 0.0 Kilometers
WGS_1984_Web_Mercator_Auxiliary_Sphere

This map is a user generated static output from an Internet mapping site and is for reference only. Data layers that appear on this map may or may not be accurate, current, or otherwise reliable.

THIS MAP IS NOT TO BE USED FOR NAVIGATION

Town of Fort Macleod



Legend

- Boundary
- Railway
- Hwy 2 Symbol
- Hwy 2
- Hwy 3 Symbol
- Hwy 3
- Hwy 811 Symbol
- Highway 811 Bridge
- Hwy 811
- Hwy 810 Symbol
- Hwy 810
- Title Linework
- Parcels

Notes

© Town of Fort Macleod



0.0 0 0.01 0.0 Kilometers
WGS_1984, Web_Mercator_Auxiliary_Sphere

This map is a user generated static output from an Internet mapping site and is for reference only. Data layers that appear on this map may or may not be accurate, current, or otherwise reliable.

THIS MAP IS NOT TO BE USED FOR NAVIGATION

Town of Fort Macleod

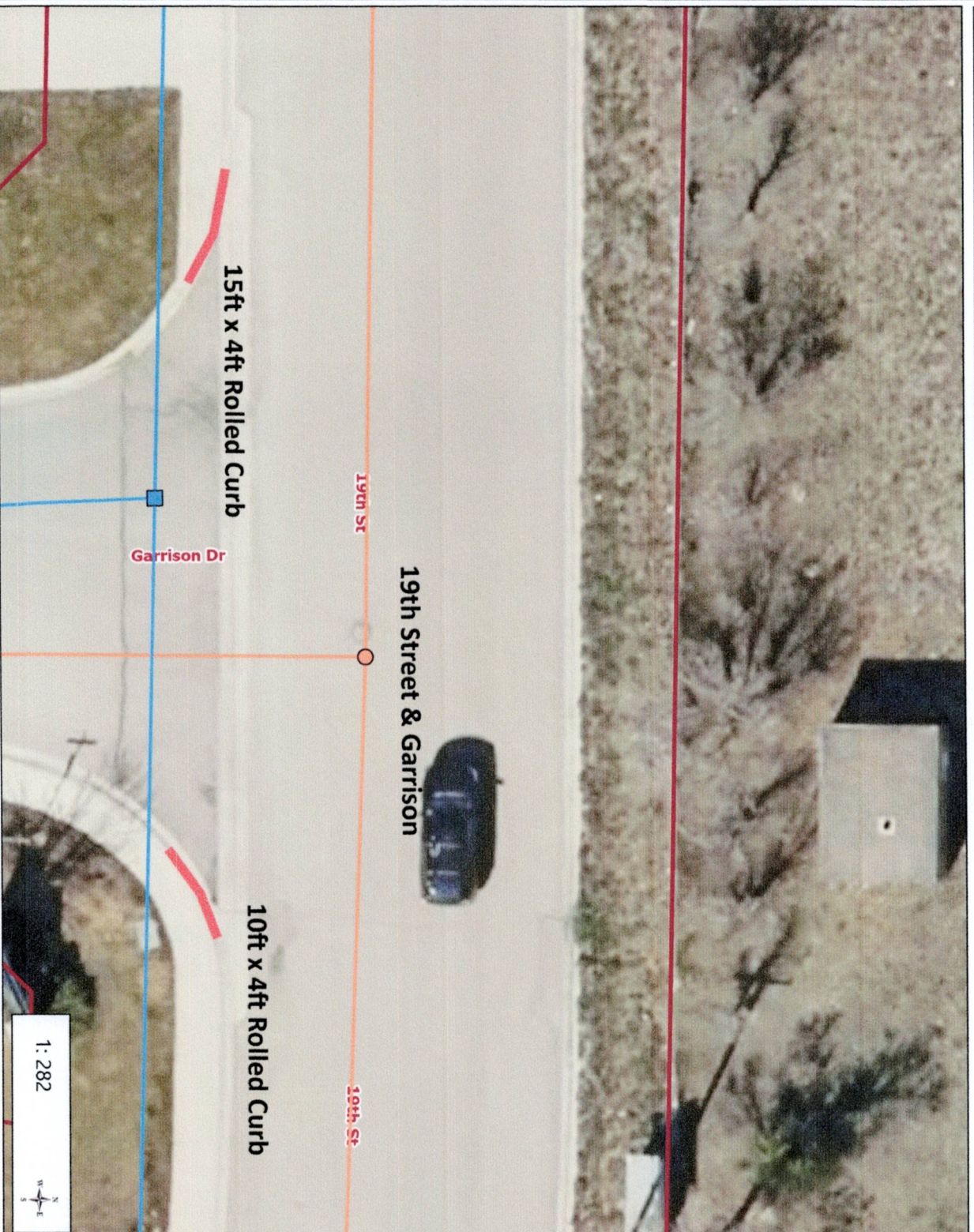


Legend

- Boundary
- 300m Sewage Lagoon
- Sanitary Point
- Railway
- 1 Hwy 2 Symbol
- 2 Hwy 2
- 3 Hwy 3 Symbol
- 3 Hwy 3
- 811 Hwy 811 Symbol
- 811 Highway 811 Bridge
- 811 Hwy 811
- 810 Hwy 810 Symbol
- 810 Hwy 810
- Water Point
- M Main Valve
- Water Fitting
- Water Hydrant
- Water Pressure Main
- Storm Manhole
- Storm Catch Basin
- Storm Gravity Main
- Sanitary Manhole
- Sanitary Gravity Main
- Title Linework
- Parcels

Notes

© Town of Fort Macleod



19th Street & Garrison

19th St

19th St

15ft x 4ft Rolled Curb

10ft x 4ft Rolled Curb

Garrison Dr

1:282



0.0 0 0.01 0.0 Kilometers

WGS_1984_Web_Mercator_Auxiliary_Sphere

This map is a user generated static output from an Internet mapping site and is for reference only. Data layers that appear on this map may or may not be accurate, current, or otherwise reliable.

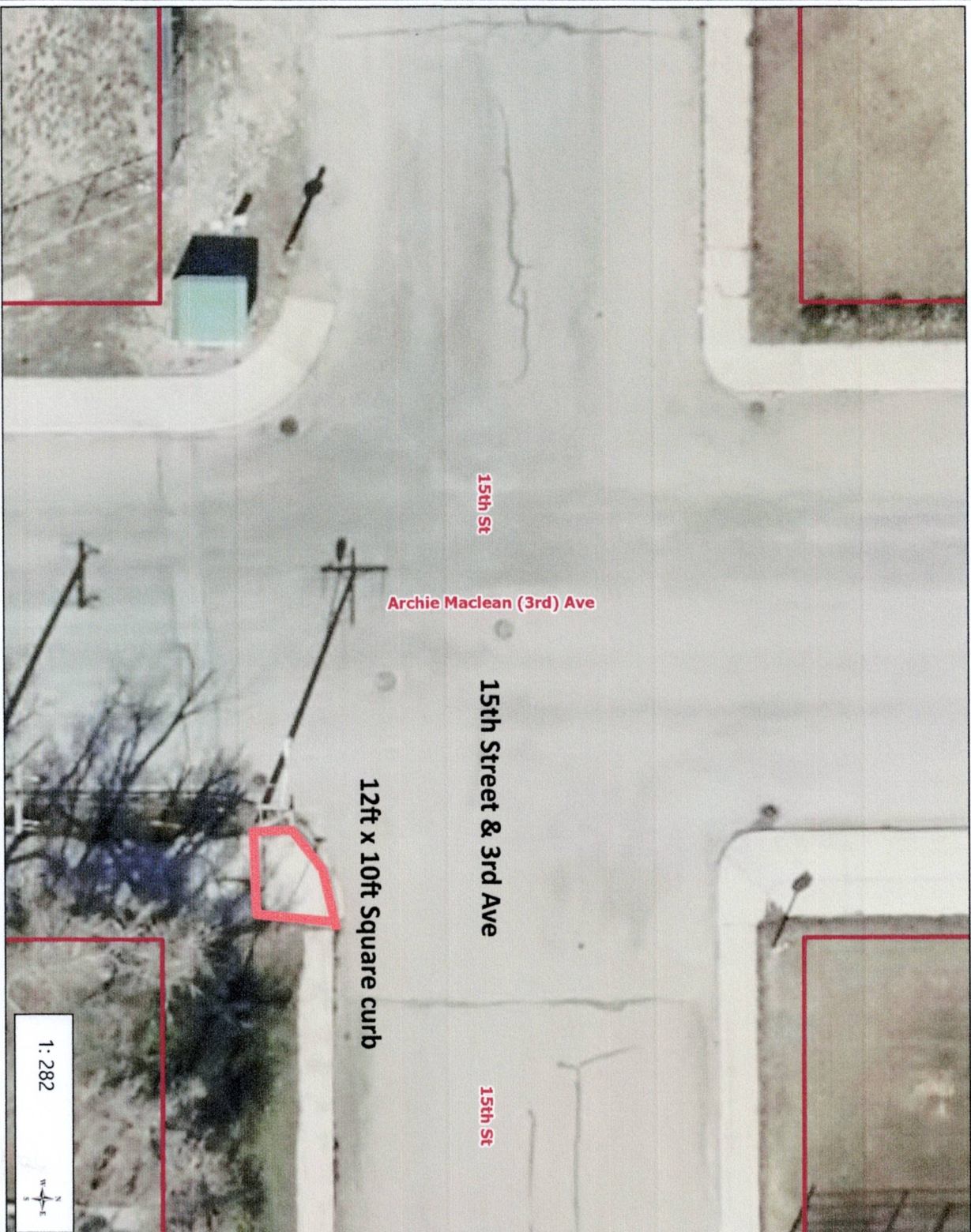
THIS MAP IS NOT TO BE USED FOR NAVIGATION

Town of Fort Macleod



Legend

- Boundary
- Railway
- Hwy 2 Symbol
- Hwy 2
- Hwy 3 Symbol
- Hwy 3
- Hwy 811 Symbol
- Highway 811 Bridge
- Hwy 811
- Hwy 810 Symbol
- Hwy 810
- Title Linework
- Parcels



Notes

© Town of Fort Macleod

This map is a user generated static output from an internet mapping site and is for reference only. Data layers that appear on this map may or may not be accurate, current, or otherwise reliable.

THIS MAP IS NOT TO BE USED FOR NAVIGATION

0.0 0 0.01 0.0 Kilometers
WGS_1984_Web_Mercator_Auxiliary_Sphere

Town of Fort Macleod



1: 564



Legend

- Boundary
- Railway
- Hwy 2 Symbol
- Hwy 2
- Hwy 3 Symbol
- Hwy 3
- Hwy 811 Symbol
- Highway 811 Bridge
- Hwy 811
- Hwy 810 Symbol
- Hwy 810
- Title Linework
- Parcels

Notes

© Town of Fort Macleod

This map is a user generated static output from an Internet mapping site and is for reference only. Data layers that appear on this map may or may not be accurate, current, or otherwise reliable.

THIS MAP IS NOT TO BE USED FOR NAVIGATION

WGS_1984_Web_Mercator_Auxiliary_Sphere

Town of Fort Macleod

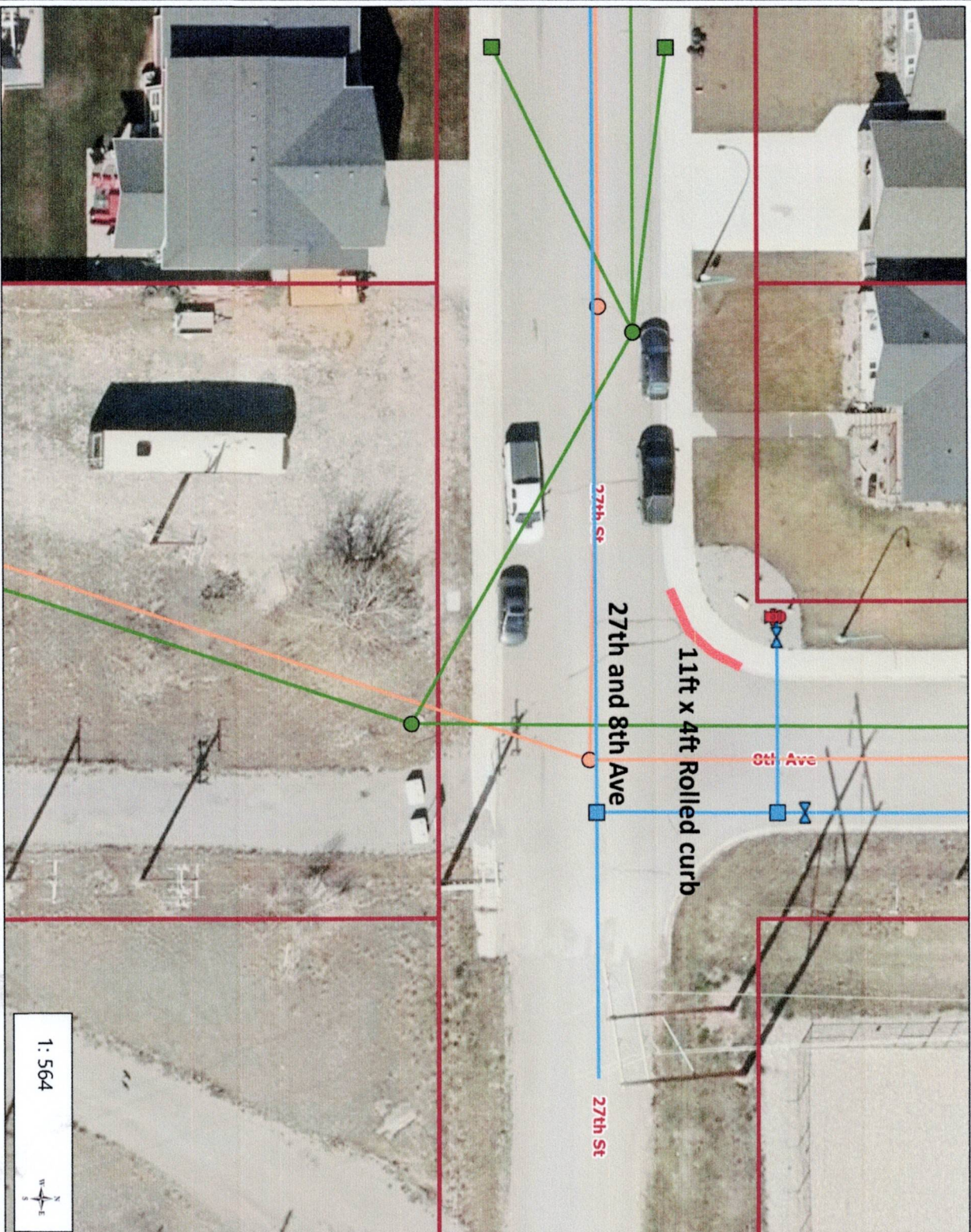


Legend

- Boundary
- 300m Sewage Lagoon
- Sanitary Point
- Railway
- Hwy 2 Symbol
- Hwy 2
- Hwy 3 Symbol
- Hwy 3
- Hwy 811 Symbol
- Highway 811 Bridge
- Hwy 811
- Hwy 810 Symbol
- Hwy 810
- Water Point
- Main Valve
- Water Fitting
- Water Hydrant
- Water Pressure Main
- Storm Manhole
- Storm Catch Basin
- Storm Gravity Main
- Sanitary Manhole
- Sanitary Gravity Main
- Title Linework
- Parcels

Notes

© Town of Fort Macleod



1:564



This map is a user generated static output from an Internet mapping site and is for reference only. Data layers that appear on this map may or may not be accurate, current, or otherwise reliable.

WGS_1984_Web_Mercator_Auxiliary_Sphere

THIS MAP IS NOT TO BE USED FOR NAVIGATION

Town of Fort Macleod

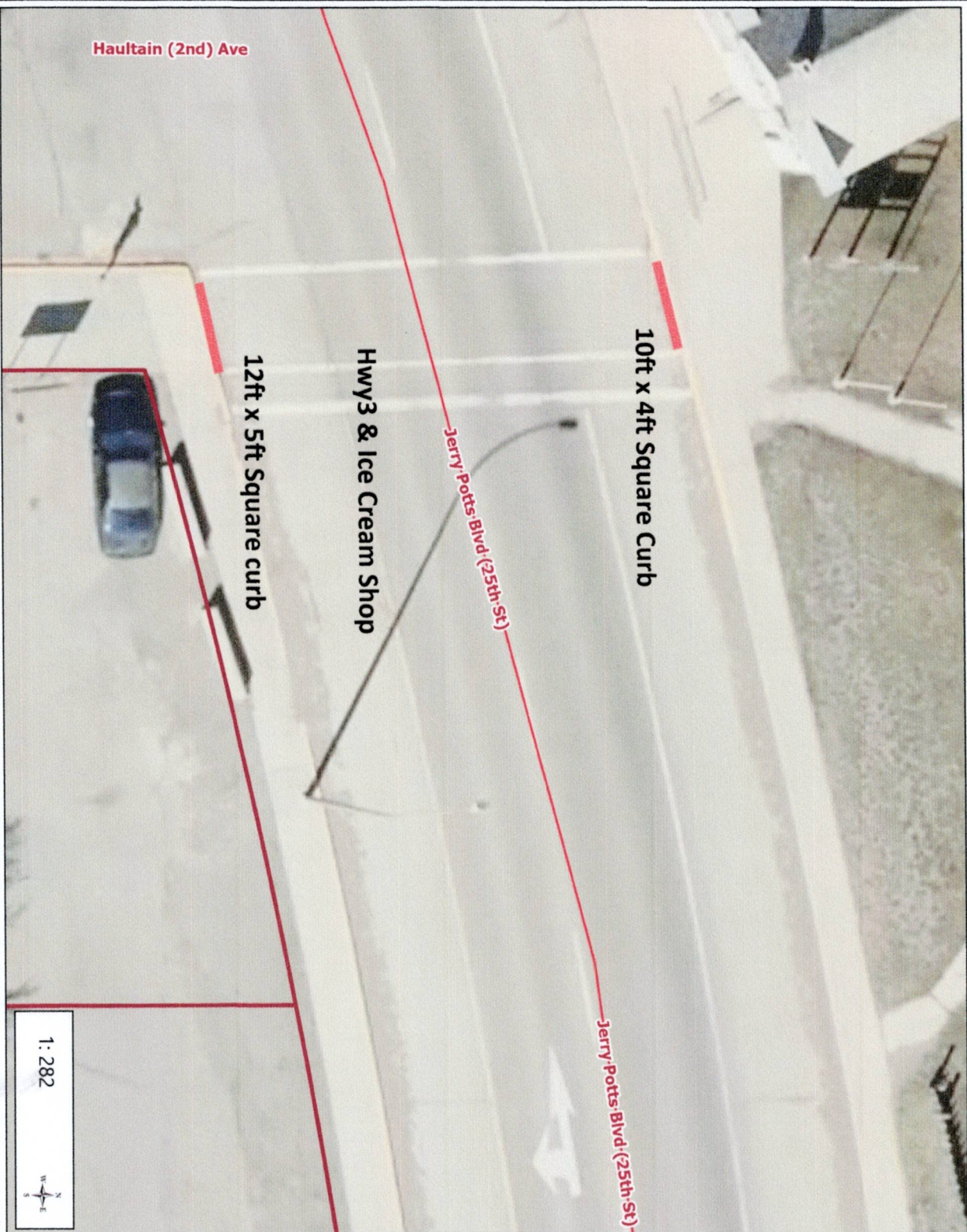


Legend

- Boundary
- Railway
- Hwy 2 Symbol
- Hwy 2
- Hwy 3 Symbol
- Hwy 3
- Hwy 811 Symbol
- Highway 811 Bridge
- Hwy 811
- Hwy 810 Symbol
- Hwy 810
- Title Linework
- Parcels

Notes

© Town of Fort Macleod



0.0 0 0.01 0.0 Kilometers
WGS_1984_Web_Mercator_Auxiliary_Sphere

This map is a user generated static output from an Internet mapping site and is for reference only. Data layers that appear on this map may or may not be accurate, current, or otherwise reliable.

THIS MAP IS NOT TO BE USED FOR NAVIGATION

Town of Fort Macleod



Legend

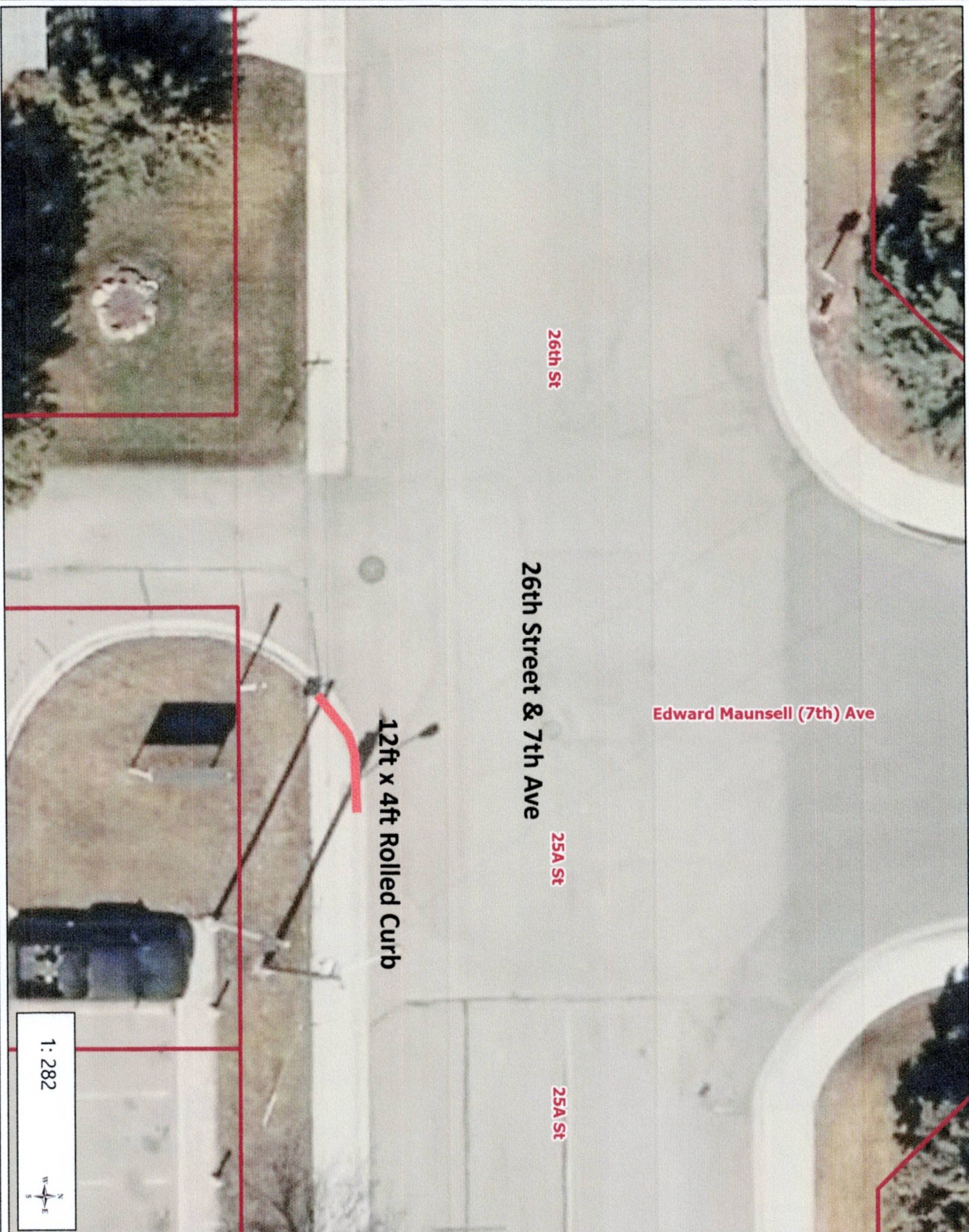
- Boundary
- Railway
- Hwy 2 Symbol
- Hwy 2
- Hwy 3 Symbol
- Hwy 3
- Hwy 811 Symbol
- Highway 811 Bridge
- Hwy 811
- Hwy 810 Symbol
- Hwy 810
- Title Linework
- Parcels

1: 282



Notes

© Town of Fort Macleod

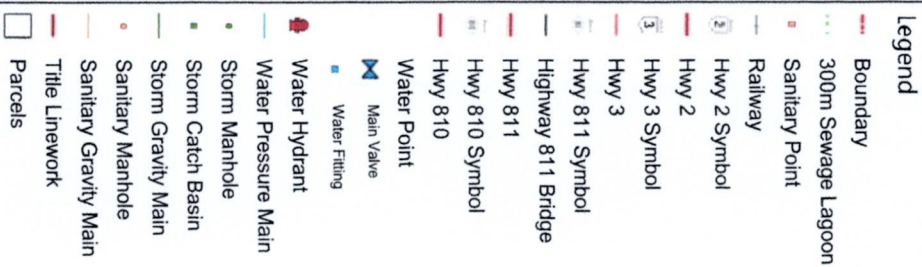


0.0 0 0.01 0.0 Kilometers

WGS_1984_Web_Mercator_Auxiliary_Sphere

This map is a user generated static output from an Internet mapping site and is for reference only. Data layers that appear on this map may or may not be accurate, current, or otherwise reliable.

THIS MAP IS NOT TO BE USED FOR NAVIGATION



© Town of Fort Madeod

THIS MAP IS NOT TO BE USED FOR NAVIGATION